



# CUSTOM LOGO SPEC SHEET

**SKU:**  
**TR-4524-30**

**DEFAULT LOGO LOCATION:**  
**FRONT**

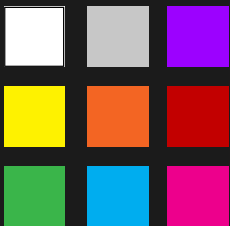
**MAX LOGO H: 8"**  
**MAX LOGO W: 20"**

## COLORS

In most situations, we can easily paint either one or two color logos.

We suggest you pick colors that are bright and poppy.. Dark and muted colors don't look great on this case.

Below are the colors we keep on hand. If you'd like a custom color, let us know. It may add a few days to the processing time, but we can probably make it happen.



## PRINT PROCESS:

All cases are painted with a high-density, scratch resistant, tour-ready paint. We use a highly refined transfer process to ensure that each logo is perfectly represented with crisp lines and intricate details.

**You simply will not find a better paint job.**

## TURNAROUND TIME

**We work very fast.** When you submit a customization request, we do everything we can to get it processed immediately. However, we want you to get a perfect product, and time must be allowed for paint to completely cure before shipping. All in all, adding a logo to your case will typically add 3-5 days to your ship time.

## FILE TYPES

.PNG, .JPG, .PDF, .AI... We can work with pretty much whatever you send us.

**--BUT--**

If you want us to love you even more as a customer, please send artwork that meets the following requirements:

- **SINGLE COLOR**
- **VECTOR or MINIMUM 1000PX WIDE**
- **NO TEXTURES OR BACKGROUNDS**